

- General Notes:**
- 01 All dimensions are in millimetres unless otherwise stated.
  - 02 All dimensions to be checked on site.
  - 03 All dimensions to be checked on site.
  - 04 All levels are shown on drawings (AOD).
  - 05 All levels are shown on drawings (AOD).
  - 06 All levels are shown on drawings (AOD).
  - 07 All levels are shown on drawings (AOD).
  - 08 All levels are shown on drawings (AOD).
  - 09 All levels are shown on drawings (AOD).
  - 10 All levels are shown on drawings (AOD).
  - 11 All levels are shown on drawings (AOD).
  - 12 All levels are shown on drawings (AOD).
  - 13 All levels are shown on drawings (AOD).
  - 14 All levels are shown on drawings (AOD).
  - 15 All levels are shown on drawings (AOD).
  - 16 All levels are shown on drawings (AOD).
  - 17 All levels are shown on drawings (AOD).
  - 18 All levels are shown on drawings (AOD).
  - 19 All levels are shown on drawings (AOD).
  - 20 All levels are shown on drawings (AOD).
  - 21 All levels are shown on drawings (AOD).
  - 22 All levels are shown on drawings (AOD).
  - 23 All levels are shown on drawings (AOD).
  - 24 All levels are shown on drawings (AOD).
  - 25 All levels are shown on drawings (AOD).

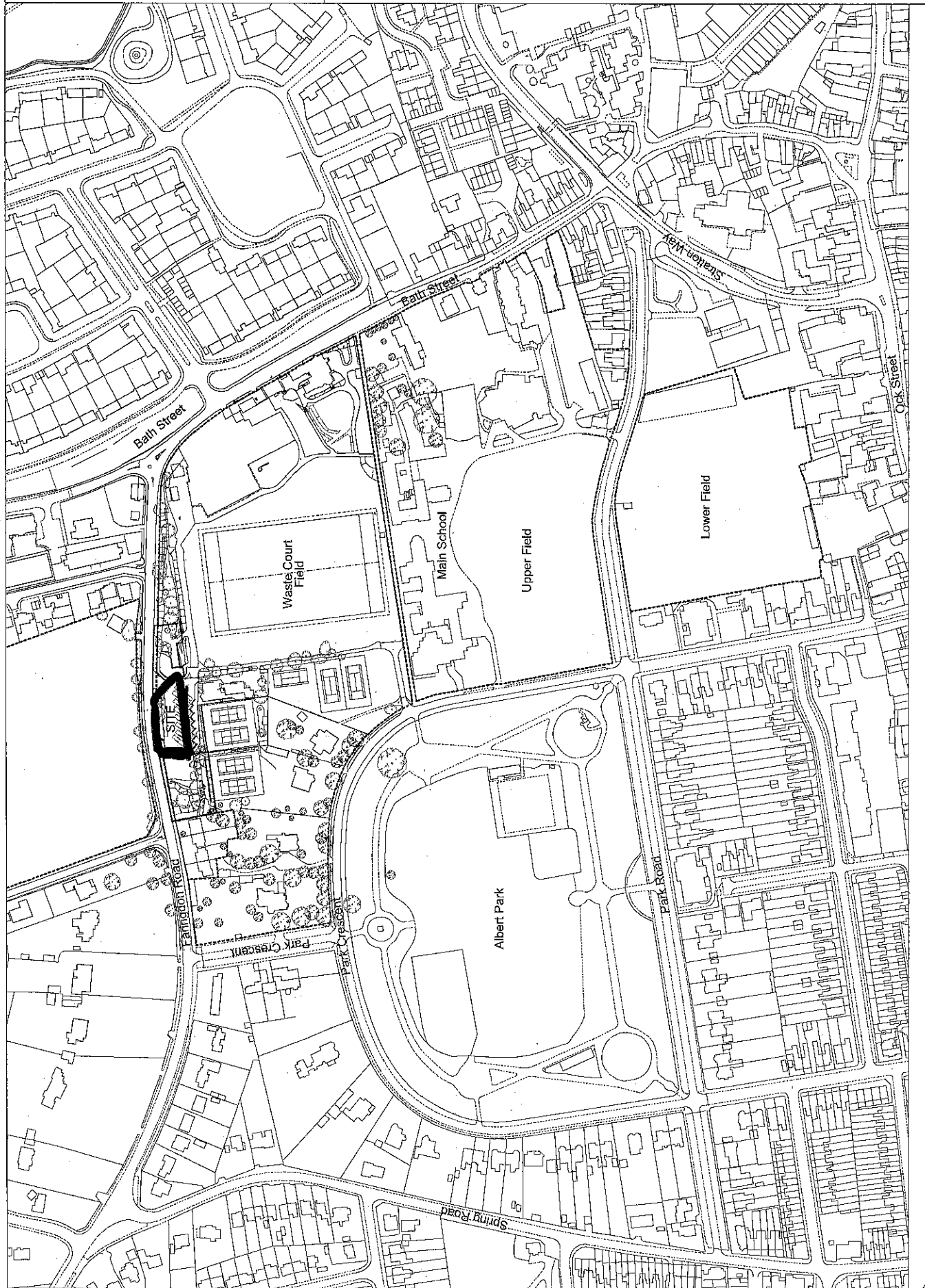
Scale at 1:2500

0 25 50 75m

**PLANNING**

Site Boundary

Site Ownership



Sheet Code	Drawing Number	Rev.	Author	Checked	Date	Description	Revision
ASBC	3000	A	Abingdon School Science Centre	Application Site Boundary	Proposed Coach Park Works		
<p>© Copyright Planning Consultants, 2013. All rights reserved. No part of this publication may be reproduced, stored in a retrieval system, or transmitted in any form or by any means, electronic, mechanical, photocopying, recording, or by any information storage or retrieval system, without the prior written permission of the copyright owner.</p>							

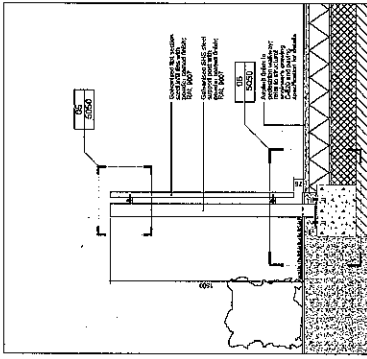




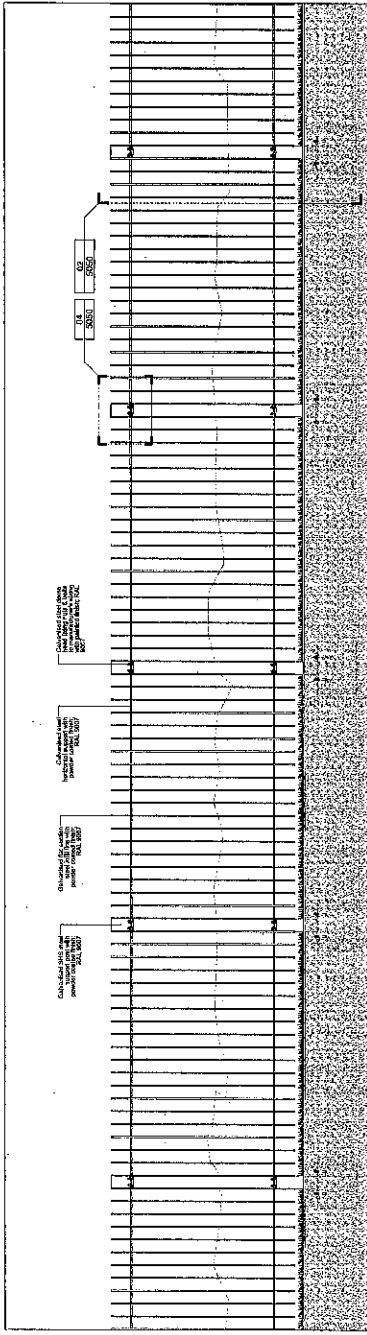
- General Notes:**
1. The Client, C&G, has provided the following information for the design of the proposed structure. It is the responsibility of the Designer to verify the accuracy of this information.
  2. All dimensions are to be rounded up to the nearest millimetre.
  3. Any dimensions which are shown in brackets are for information only.
  4. All loads are shown on the drawings in accordance with the relevant standards. The Designer should verify the accuracy of these loads.
  5. The Designer should verify the accuracy of the ground conditions shown on the drawings.
  6. The Designer should verify the accuracy of the ground conditions shown on the drawings.
  7. The Designer should verify the accuracy of the ground conditions shown on the drawings.
  8. The Designer should verify the accuracy of the ground conditions shown on the drawings.
  9. The Designer should verify the accuracy of the ground conditions shown on the drawings.
  10. The Designer should verify the accuracy of the ground conditions shown on the drawings.
  11. The Designer should verify the accuracy of the ground conditions shown on the drawings.
  12. The Designer should verify the accuracy of the ground conditions shown on the drawings.
  13. The Designer should verify the accuracy of the ground conditions shown on the drawings.
  14. The Designer should verify the accuracy of the ground conditions shown on the drawings.
  15. The Designer should verify the accuracy of the ground conditions shown on the drawings.
  16. The Designer should verify the accuracy of the ground conditions shown on the drawings.
  17. The Designer should verify the accuracy of the ground conditions shown on the drawings.
  18. The Designer should verify the accuracy of the ground conditions shown on the drawings.
  19. The Designer should verify the accuracy of the ground conditions shown on the drawings.
  20. The Designer should verify the accuracy of the ground conditions shown on the drawings.

**Notes:**

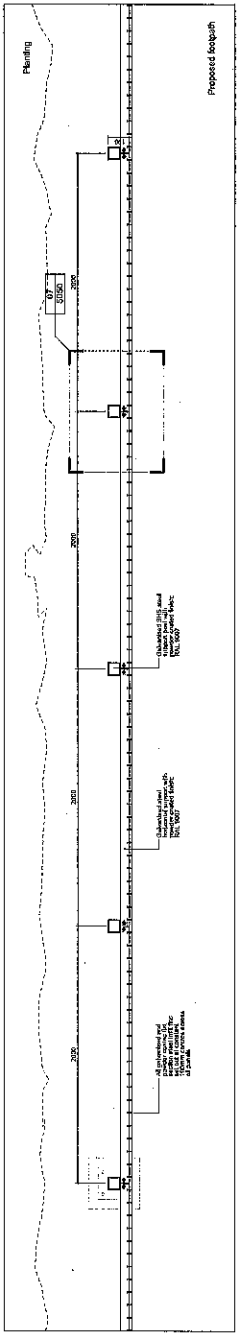
1. The Designer should verify the accuracy of the ground conditions shown on the drawings.
2. The Designer should verify the accuracy of the ground conditions shown on the drawings.
3. The Designer should verify the accuracy of the ground conditions shown on the drawings.
4. The Designer should verify the accuracy of the ground conditions shown on the drawings.
5. The Designer should verify the accuracy of the ground conditions shown on the drawings.
6. The Designer should verify the accuracy of the ground conditions shown on the drawings.
7. The Designer should verify the accuracy of the ground conditions shown on the drawings.
8. The Designer should verify the accuracy of the ground conditions shown on the drawings.
9. The Designer should verify the accuracy of the ground conditions shown on the drawings.
10. The Designer should verify the accuracy of the ground conditions shown on the drawings.
11. The Designer should verify the accuracy of the ground conditions shown on the drawings.
12. The Designer should verify the accuracy of the ground conditions shown on the drawings.
13. The Designer should verify the accuracy of the ground conditions shown on the drawings.
14. The Designer should verify the accuracy of the ground conditions shown on the drawings.
15. The Designer should verify the accuracy of the ground conditions shown on the drawings.
16. The Designer should verify the accuracy of the ground conditions shown on the drawings.
17. The Designer should verify the accuracy of the ground conditions shown on the drawings.
18. The Designer should verify the accuracy of the ground conditions shown on the drawings.
19. The Designer should verify the accuracy of the ground conditions shown on the drawings.
20. The Designer should verify the accuracy of the ground conditions shown on the drawings.



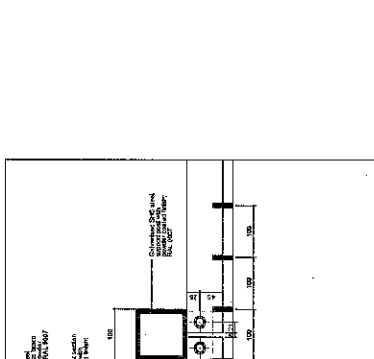
**01 Elevation**  
Scale: 1:50



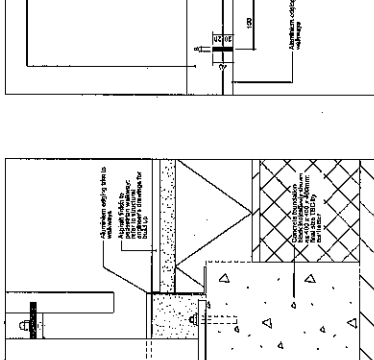
**02 Section**  
Scale: 1:50



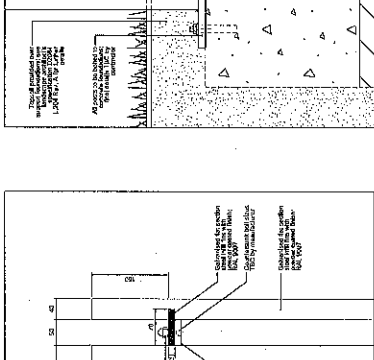
**03 Plan**  
Scale: 1:50



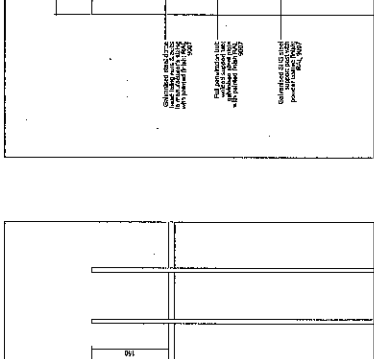
**04 Elevation Detail**  
Scale: 1:10



**05 Section Detail**  
Scale: 1:10



**06 Section Detail**  
Scale: 1:10



**07 Plan Detail**  
Scale: 1:10

**TENDER**

Drawings	Scale	Quantity	Notes
01 Elevation	1:50	1	
02 Section	1:50	1	
03 Plan	1:50	1	
04 Elevation Detail	1:10	1	
05 Section Detail	1:10	1	
06 Section Detail	1:10	1	
07 Plan Detail	1:10	1	

Client	Project	Contract No.	Scale
Alphington School	Alphington School Schoolhouse Centre	14/141	1:50

Drawings	Scale	Quantity	Notes
01 Elevation	1:50	1	
02 Section	1:50	1	
03 Plan	1:50	1	
04 Elevation Detail	1:10	1	
05 Section Detail	1:10	1	
06 Section Detail	1:10	1	
07 Plan Detail	1:10	1	

Drawings	Scale	Quantity	Notes
01 Elevation	1:50	1	
02 Section	1:50	1	
03 Plan	1:50	1	
04 Elevation Detail	1:10	1	
05 Section Detail	1:10	1	
06 Section Detail	1:10	1	
07 Plan Detail	1:10	1	

Drawings	Scale	Quantity	Notes
01 Elevation	1:50	1	
02 Section	1:50	1	
03 Plan	1:50	1	
04 Elevation Detail	1:10	1	
05 Section Detail	1:10	1	
06 Section Detail	1:10	1	
07 Plan Detail	1:10	1	